



i-loview 16 FHD

User Manual

i-loview 16 FHD

See further get more

Designed By Chris Park

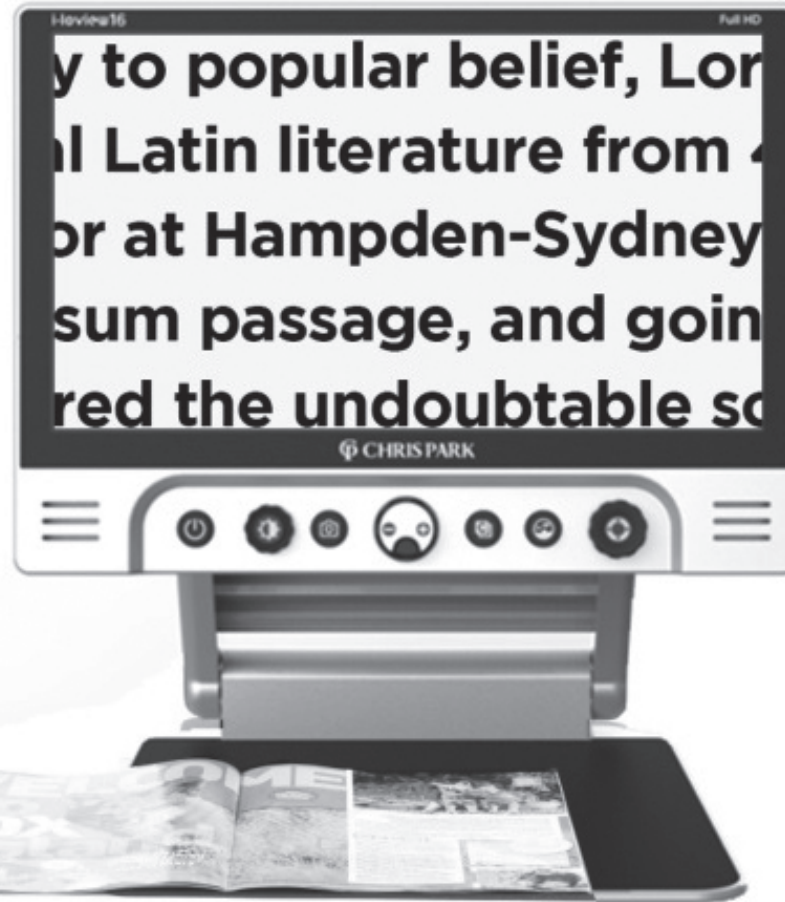


i-loview 16 Full HD

User Manual

CONTENTS

1. Introduction	03
2. Precaution	05
3. Package	07
4. Instruction before use	08
5. Configuration	12
6. Hot keys & Features	21
7. Technical specifications	29
8. Warranty	31



y to popular belief, Lor
al Latin literature from 4
or at Hampden-Sydney
sum passage, and goin
red the undoubtable sc

y to popular belief, Lor
al Latin literature from 4
or at Hampden-Sydney
sum passage, and goin
red the undoubtable sc

y to popular belief, Lor
al Latin literature from 4
or at Hampden-Sydney
sum passage, and goin
red the undoubtable sc

See further get more _____

Designed By Chris Park



Please read this manual carefully to ensure safe and proper use of the product.

Important

Negligent use or misuse of the product may cause a fire, personal injury or serious damage.

- Do not use damaged power plug or unsuitable outlet to prevent electronic shock or fire.
- Do not touch power plug with wet hands to prevent electronic shock.

Important

Misuse of the product may result in personal injury or damage to the unit.

- Use only the adapter supplied with the product. Other adapters may damage the unit.
- Do not use this unit in moist environments like a bathroom or shower room.
- Do not place heavy objects on the unit.
- Do not attempt to disassemble, remodel, or repair the unit. It may damage the unit and will void the warranty.

See further get more _____

Designed By Chris Park

Please read this manual carefully to ensure safe and proper use of the product.

Important

After twelve(12) months usage, the lifespan of the battery may be shortened.

Important

Keep the product out of direct sunlight and extreme temperatures.

- The display may not work properly.
- The recommended operating temperature is between 0 ~ 35 °C (32 ~ 95 °F)

Thank you very much for choosing the i-loview 16 Full HD (i-1588)
Please check for the following items in the i-loview 16 Full HD (i-1588)



1) Portable magnifier



2) Power adapter



3) Carrying pouch



4) User's manual



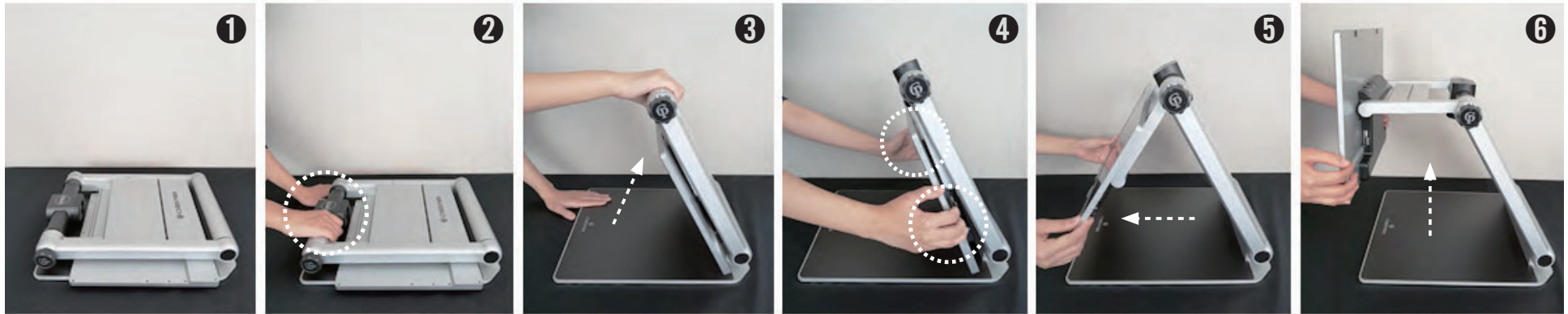
5) Microfiber cloth for cleaning the display

See further get more _____

Designed By Chris Park

- The battery must be fully charged prior to the initial use.
Please connect the supplied power adapter to the DC input jack to charge the battery.
- Remove the LCD protection film before using the unit.
- Be careful not to allow foreign material to adhere to the camera lens.
If any foreign material is on the lens, wipe it off with the provided microfiber cloth.

Opening the i-loview 16 FHD

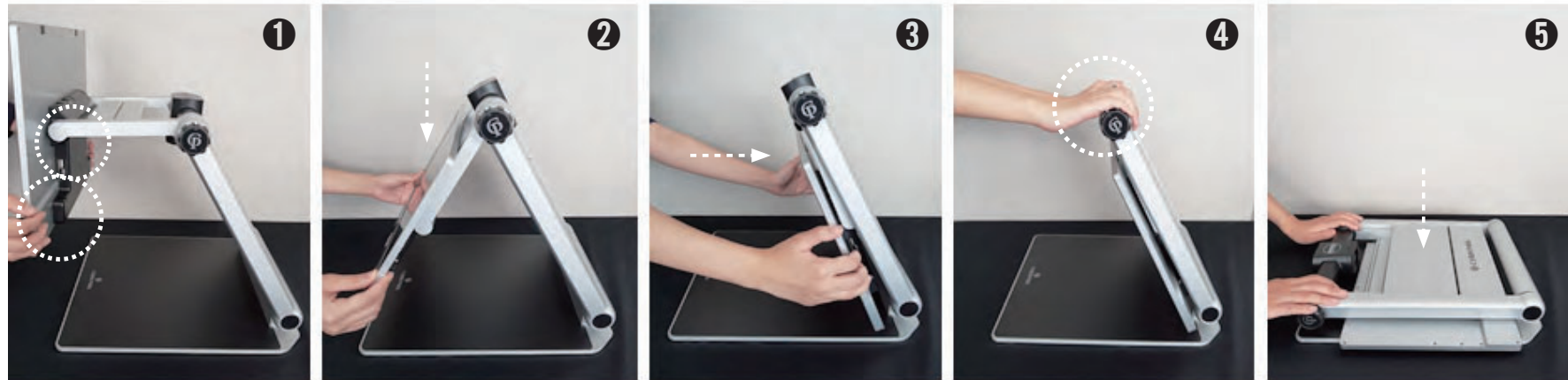


- ① Place the folded i-loview 16 on a stable surface such as a table.
- ② Press on the base plate with one hand, while the other hand lifts the top of the body frame.
- ③ Lift the arm until it locks in place.
- ④ Put both hands on the left and right sides of the LCD monitor.
- ⑤ Pull the LCD monitor towards you.
- ⑥ Push the LCD monitor up using both hands and adjust it to a suitable position.

See further get more _____

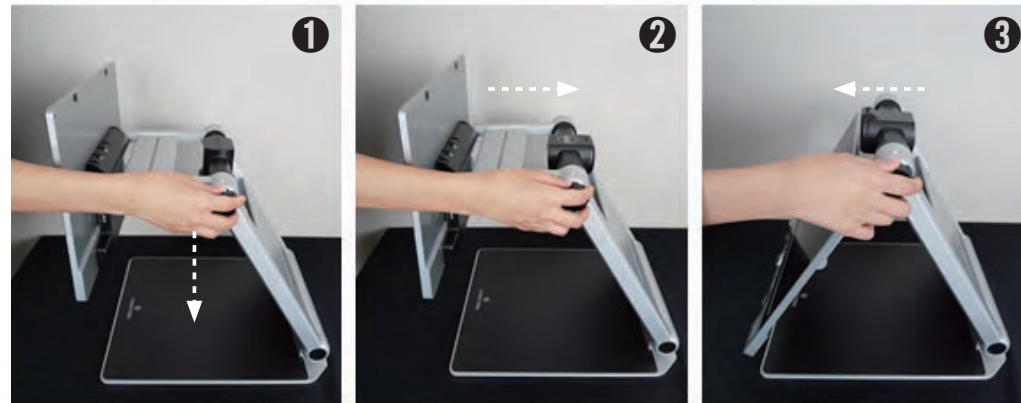
Designed By Chris Park

Closing the i-loview 16 FHD



- ① Put both hands on the left and right sides of the LCD monitor.
- ② To close the i-loview 16, push down the LCD monitor using both hands.
- ③ Push the LCD monitor toward the main body frame.
- ④ Place both hands on top of the body frame.
- ⑤ Lower the top of the body frame until it is closed.

Camera positions i-loview 16 FHD

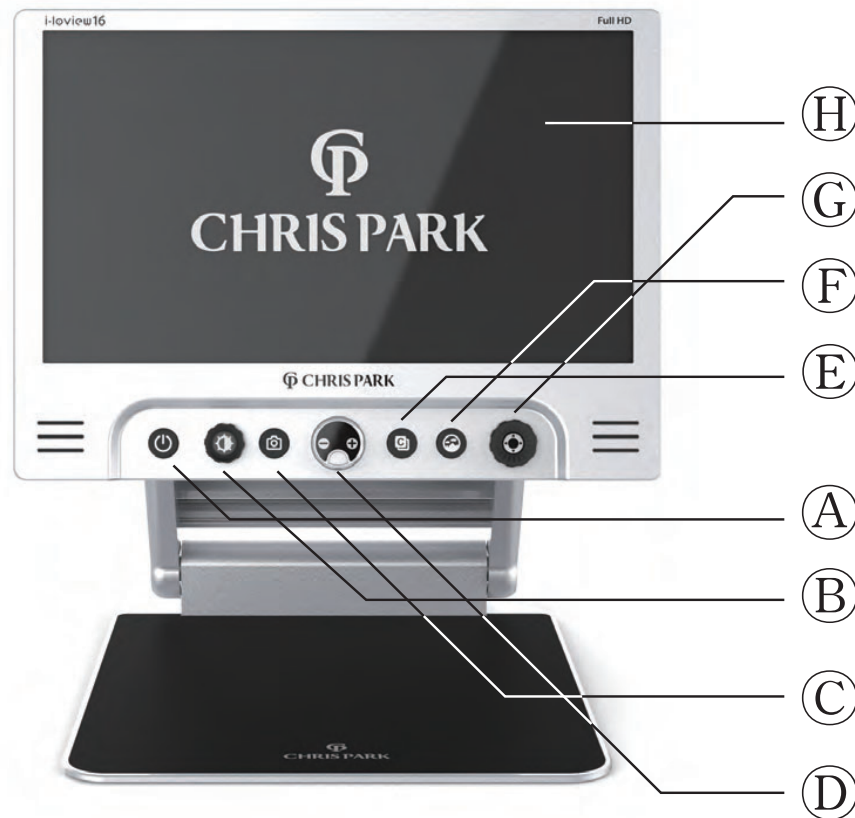


You can switch between modes by rotating /adjusting the Camera pointer (Camera positioning wheel)

- ① Reading mode
- ② Distance-view mode
- ③ Self-view mode (mirror mode)

See further get more _____

Designed By Chris Park



Hardware Description

- Ⓐ Power On/Off button
- Ⓑ Image optimizer Wheel
(Adjusting a brightness)
- Ⓒ Image capture button
- Ⓓ Zoom Wheel
- Ⓔ Color mode button
- Ⓕ Natural color button
- Ⓖ Super Function key
(A jog Key))
- Ⓗ LCD



Hardware Description

- ① Camera
- ② Close up lens
- ③ DC jack

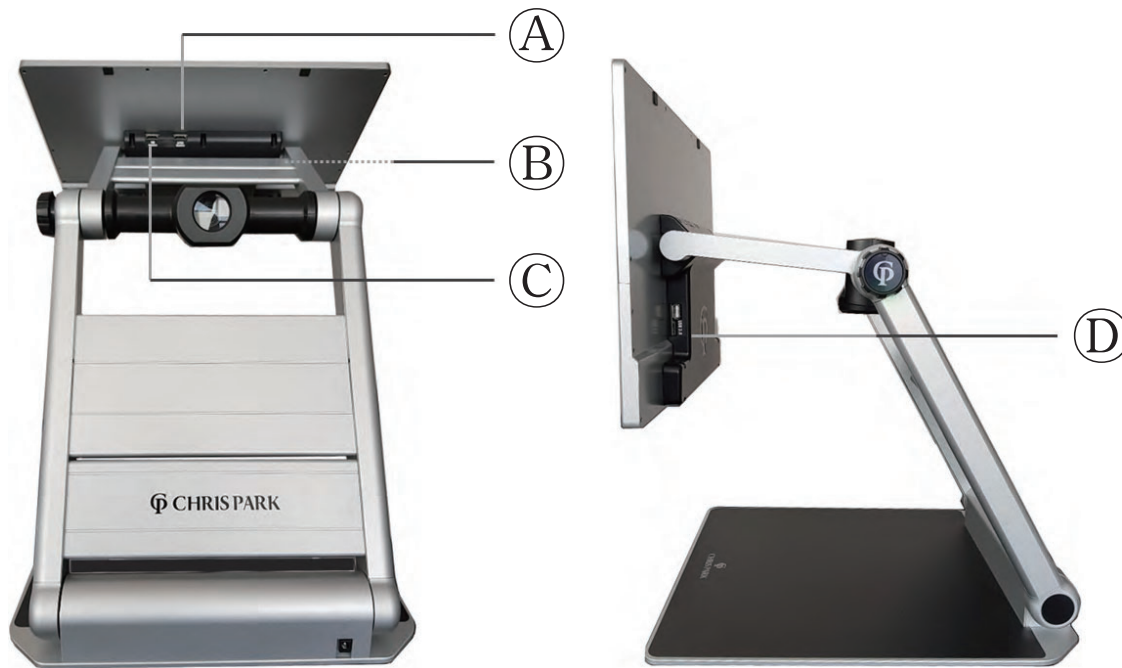
See further get more _____

Designed By Chris Park



Hardware Description

- Ⓛ LED lights
- Ⓜ Camera pointer
(Camera positioning wheel)



External Connections

- Ⓐ HDMI OUT
- Ⓑ PORT For External Key
(Optional / SW upgrade)
- Ⓒ HDMI IN (Optional)
- Ⓓ USB 3.0 (Optional)

See further get more _____

Designed By Chris Park



Ⓐ Power On/Off button

- Power on / off : Press the button for 2 seconds.

Ⓑ Image optimizer wheel

Provide different functions depending on the setting.

- Natural color mode : Turn the knob to adjust brightness level of the display. (5 steps)
- Color mode : Turn the knob to adjust the image quality optimizing settings. Press it to return to the default setting.
- Auto Focus on / off : Press and hold the button for 2 seconds.



Ⓐ Ⓑ Ⓒ Ⓓ Ⓔ Ⓕ Ⓖ

Ⓒ Image capture button

Briefly press the button and the image on the screen will freeze.

- You can then zoom in/out on the still image and adjust color and screen brightness.
- Press the button again to return to live viewing mode.
- You are able to pan around the image using the **Super Function Key** (Ⓖ).

Ⓓ Zoom Wheel

To adjust the magnification, turn the knob.

- Magnification range :
 - Live image mode : 2.0x ~ 32x
 - Image capture mode : ~ 176x
 - Adjustable magnification : 1.4x ~ 330x
- Press and hold the button to use the menu mode.

See further get more _____

Designed By Chris Park



Ⓔ Color mode button

The image on the screen can be viewed in eight(8) color modes

- Natural color mode
- White text on black background mode
- Black text on white background mode
- Yellow text on black background mode
- Black text on yellow background mode
- Green text on black background mode
- Blue text on yellow background mode
- Yellow text on blue background mode

Up to 35 color modes can be set using the menu.



⑥ Natural color button

- Press the button to view pictures or documents in natural color.
- Press and hold the button to use the 'Find function'.

⑦ Super Function Key

Used for various functions in different modes.

- Scrolling the frozen image.
- Selecting / Using the line / mask functions.

See further get more _____

Designed By Chris Park

Ⓜ LCD screen**Ⓜ** Camera

- Be careful not to allow foreign material to adhere to camera lens.
- If any foreign material is on the lens, wipe it off with the provided microfiber cloth.

Ⓜ Close up lens

Open the close up lens for the distance view mode.

Ⓜ DC jack

- You can insert the power adapter here to charge the battery.
- When charging a red light will show, when it is fully charged the light will turn green.

Ⓜ LED lights**Ⓜ** Camera pointer (Camera positioning wheel)

- Adjust the direction of the camera by using the wheel.
- Rotate the wheel to easily switch/adjust between closeup documents, distance view, self-viewing and everything in between.

(1) Line & Mask


Press and hold the **Super Function Key**() to activate Line & Mask.


When Line & Mask is active, the direction key and wheel of the **Super Function Key**() works as follows.

• Left & Right  : Choose the function.

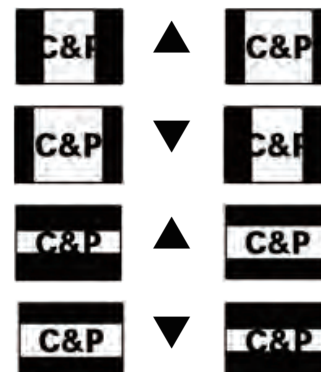
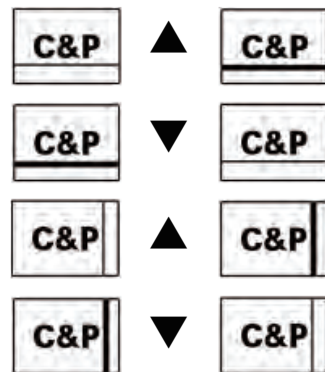
1) Horizontal line 

2) Vertical line 

3) Horizontal mask 

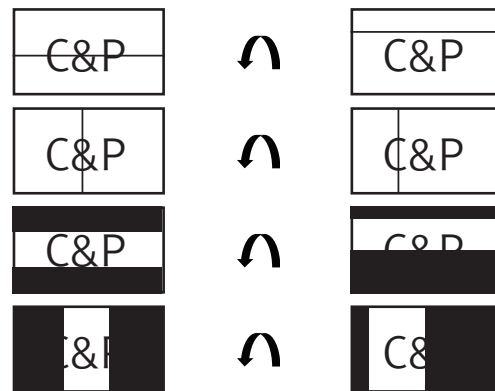
4) Vertical mask 

• Up & Down  : Increase or decrease the thickness of a line and the distance between masks.

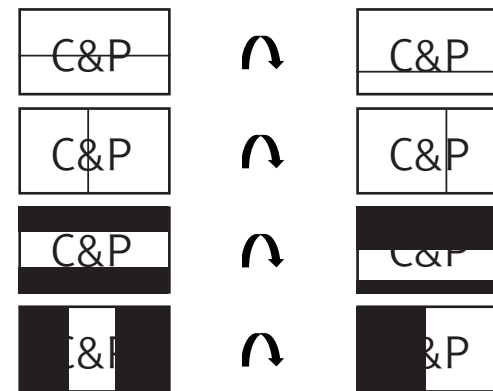


- Wheel  : Move the position of the Line & Masks.


1) Counterclockwise



2) Clockwise



(2) Battery status

- The status of the remaining battery power is not normally displayed.
- The battery charging icon will be displayed when the power adapter is connected.
- You can on or off the status of the remaining battery power by pressing the **Image capture button**() for 3 seconds or more.

(3) HDMI OUT mode

- When connecting HDMI output cable the LCD display appear blank and information will be displayed on an external monitor.
- You can switch between the LCD display and an external monitor by pressing the **Super Function Key**(**G**).

(4) Scroll the frozen image

- If you press and hold the **Natural color button**(**F**) when looking at a frozen Image, an indicator will appear on the screen to show which area you're looking at.
- If you press the **Zoom wheel**(**D**) when looking at a frozen image a horizontal line will appear, this can be moved by turning the **Super Function Key**(**G**).
- You can pan around the frozen image using the **Super Function Key**(**G**).
- When you scroll to the end of the screen, press the direction you'd like to move to next using the **Super Function Key**(**G**) again to automatically advance to the next paragraph or line.
- If you press the center of **Super Function Key**(**G**), you will automatically advance to the next paragraph or line.

See further get more _____

Designed By Chris Park

(5) Power saving mode

- If you leave the unit turned on and unused for 10 minutes, it automatically goes into the Power saving mode. If the unit is left for 3 minutes after entering the Power saving mode, power is automatically switched off.

(6) Color mode selection

- Press and hold the **Color mode button**(**E**) and rotate the **Zoom wheel**(**D**) to cycle through the available color modes.
- **Color mode button**(**E**) + **Zoom wheel**(**D**, **Right**) : Next color mode
- **Color mode button**(**E**) + **Zoom wheel**(**D**, **Left**) : Previous color mode

(7) Self-view mode & Distance-view mode

You can change the mode by moving the camera with the **Camera pointer (Camera positioning wheel)** (**M**).

- Self-view mode (Mirror mode)
Use when the direction of the camera lens is facing the user.
 - The camera switches automatically into self-view mode.
 - It automatically changes to the previously used color and magnification range in this mode.

- Distance-view mode
Use when viewing a distant object, such as a whiteboard.
 - The camera switches automatically into distance-view mode.
 - It automatically changes to the previously used color and magnification range in this mode.
 - Open the close up lens when using the distance-view mode.

(8) Natural color & Find Function





- Press the **Natural color button**(**F**) to view pictures or documents in natural color.
- Press and hold the **Natural color button**(**F**) to zoom out and display 'the find box' on the screen to help you locate the object under the camera. Take your finger off the button to zoom in to the previous magnification level.

(9) MENU

- In Menu mode, you can change the settings of the following functions.
Press and hold the center of the **Zoom wheel**(**D**) to enter the menu mode.
In Menu mode, you can change or save settings by using the **Zoom wheel**(**D**) and **Super Function Key**(**G**).
To move the cursor, turn **Zoom wheel**(**D**) or use the **Super Function Key**(**G**).

See further get more _____

Designed By Chris Park

To select the menu, press the center of the **Zoom wheel**() or **Super Function Key**().
To return to the previous screen, press and hold the center of the **Zoom wheel**() or **Super Function Key**().

- Color mode
 - Add or remove your preferred color modes (max 35 modes)
 - You can also customize your own preferred color setting.
 - Default : Basic 7 color modes selected
 - Extend : All 35 color modes selected
 - After selecting the preferred color mode, press 'save' to apply it.

- Zoom ratio
 - You can set the magnification range.
 - Default magnification range : 2.0x ~ 32x

- Adjusting LED brightness
 - You can adjust the LED brightness.

- Reset
 - Reset all settings back to default values.

- More settings
 - If you select More settings, you can adjust the following functions.
[Language / Capture scroll speed / Key Lock Mode / Personal & Public / Power saving mode / Save & Exit]
 - The menu of More setting is applied after selecting the Save & Exit or by pressing and holding the **Image optimizer wheel**(**B**).
- Language
 - You can select your preferred language.
- Capture scroll speed
 - You can adjust the Capture scroll speed using the **Image optimizer wheel**(**B**).
 - You can test a scroll speed in a real-time.
- Key Lock Mode
 - If you select “yes”, only 3 keys [**Zoom wheel**(**D**), **Color mode button**(**E**), **Natural color button**(**F**)] are available.

See further get more _____

Designed By Chris Park

- Personal & Public
 - The stored Personal and Public mode will be maintained even after reset.
 - Personal Mode : Store all current setting values after reboot.
 - Public Mode : Initialize all setting values after reboot.

- Power saving mode
 - You can adjust the Power- OFF time.
 - Default setting time : LCD OFF = 10 minutes, Power OFF = 3 minutes
 - You can change LCD or Power OFF time as selecting your preferred times.

Technical specifications

LCD Screen Size	15.6inch (396mm), 16 : 9 wide screen
LCD Resolution	1920 x 1080 (Full HD)
LCD Rotation angle	180 degree
Camera Specifications	1920 x 1080, 60 fps / Auto Focus
Dimensions	Approx. 381mm x 406mm x 474.5mm (unfolded) Approx. 381mm x 408mm x 61.5mm (folded)
Light weight	4.36 kg / 9.6 lbs (without battery) 4.73 kg / 10.4 lbs (include battery)
Color mode	Default 8 (Extended 35)
Magnification range	2.0x ~ 32x (Live Mode – default) Selectable : 1.4x ~20x, 3.5x ~ 60x 2.0x ~ 176x (Image capture Mode - default) 1.4x ~ 330x (Adjustable magnification)
Camera mode	Reading mode, Distance-view mode, Self-view mode
Battery capacity	16.8V, 5200mAh (Max),14.5V, 5100mAh (Nominal)
Battery weight	370 g (0.82 lbs)
Power consumption	14~20W (in operation)
Battery lifetime	Normal 5.5 hours (LCD Backlight 3 level, Light 5 level) Min.5hours (LCD Backlight 5 level(Max), Light 10 level(Max))
Adaptor	Input power rating : 100-240V, 50-60Hz, 1.7A Ouput power rating : DC +19V, 3.42A
Connectivity	HDMI OUT/ External Key Port (SW upgrade) /HDMI IN (Optional)/ USB 3.0 (Optional)

See further get more _____

Designed By Chris Park

This unit is an EMC-registered device.



This device bears the CE and FCC , KC approval mark

Chris Park Design i-loview 16 Full HD Warranty Policy

- 1) The warranty term is for two(2) years,
except for the battery which is warranted for twelve(12) months.
- 2) The warranty does not cover any issues or damage arising from:
 - > Accidental damage or misuse.
 - > Improper maintenance, installation, adjustment operation, alterations or modifications.
 - > liquid or food spills.
 - > All metal and plastic surfaces and all other externally exposed parts
that will be scratched or damaged due to normal wear and tear of the unit.
- 3) You must provide proof of purchase including the date of purchase to receive warranty service.
- 4) Anyone using i-loview video magnifier does so knowingly assuming certain risks, due to the need to utilize vision enhancement devices.
- 5) If you have any further questions please contact C&P for detailed information.

See further get more _____

Designed By Chris Park

See further get more _____

Designed By Chris Park



C & P

Creativity and Personality for Assistive Technology
www.chrisparkdesign.com

Designed in Newport Beach, California, USA
Made in South Korea

See further get more

Designed By Chris Park



C&P Chris Park – USA Office

Newport Beach CA 92660 USA

E-mail: sales@chrisparkdesign.com

C&P Chris Park – ASIA Office

Research Center (Busan)

78 Centum jungang-Ro, Haeundae-Gu, Busan, South Korea 48059

E-mail: sales@chrisparkdesign.com

Design Center (Seoul)

Unju-Ro201, Gangnam-Gu, Seoul, South Korea 06274

E-mail: sales@chrisparkdesign.com